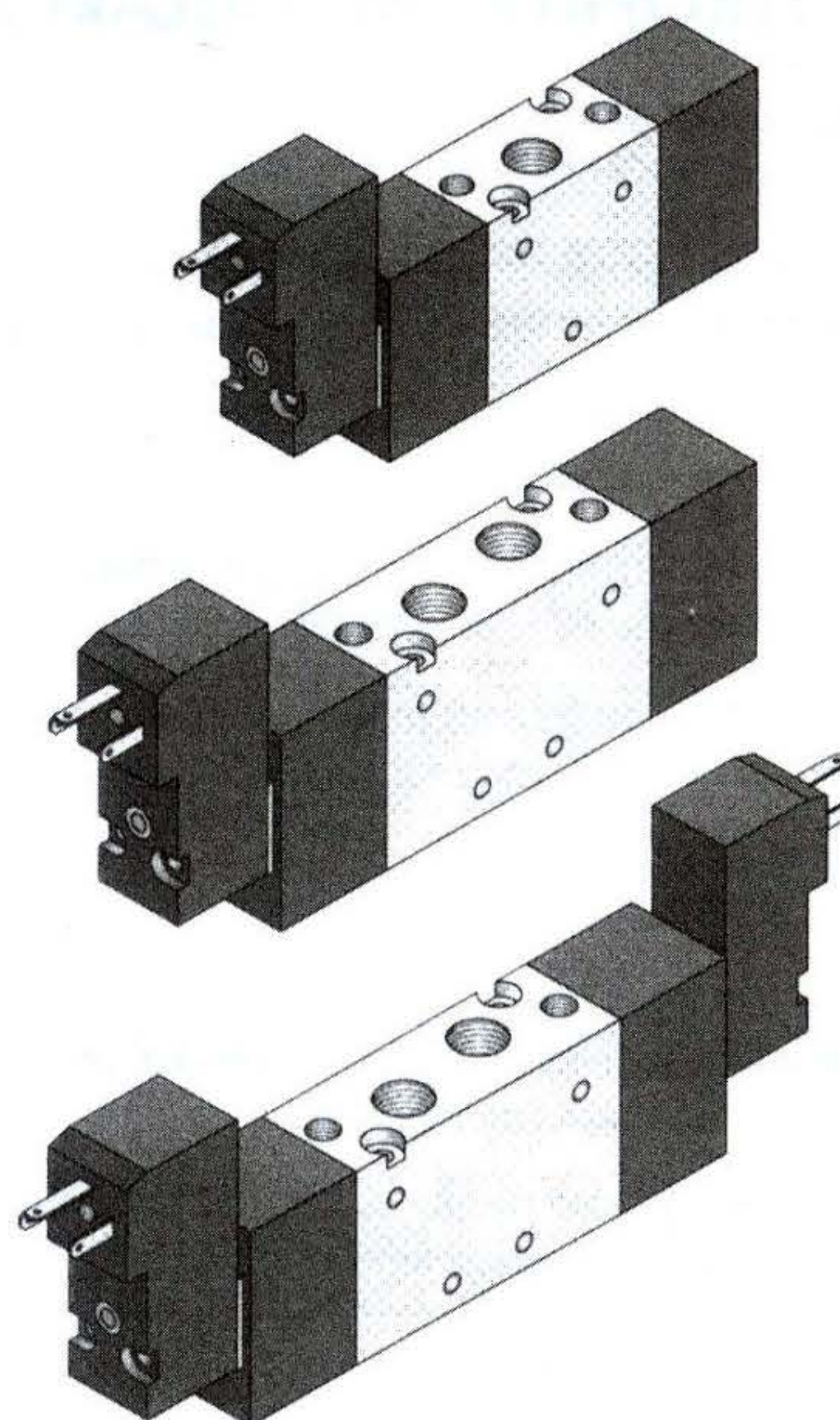


- Valvole a spola 3/2-5/2-5/3 con attacchi filettati G1/8"
3/2-5/2-5/3 spool valves with G1/8" threaded ports
- Spessore della valvola: 18 mm
Valve thickness: 18 mm
- Montaggio in linea, su basi modulari o a posti fissi
Installation in-line, on multiple sub-bases or manifolds
- Azionamento elettropneumatico monostabile o bistabile
Mono-stable or bi-stable solenoid pilot
- Elettropilota 15 mm basso assorbimento (2W) a norma Din 43650, forma C
15 mm low consumption solenoid pilot (2W), compliant to norm Din 43650, Cform
- Azionatore manuale monostabile sull'elettropilota
Non-detented manual override on the solenoid pilot



Tempi di risposta - response times

monostabile <i>mono-stable</i>	TRA (14): 13 ms TRR (12): 26 ms
bistabile <i>bi-stable</i>	TRA (14): 24 ms TRR (12): 24 ms

Materiali

Corpo: alluminio 11S
Molla: INOX
Guarnizioni: NBR
Spola: INOX
Parti interne: ottone OT58

Materials

Body: aluminium 11S
Spring: stainless steel
Seals: NBR
Spool: stainless steel
Internal parts: brass OT58

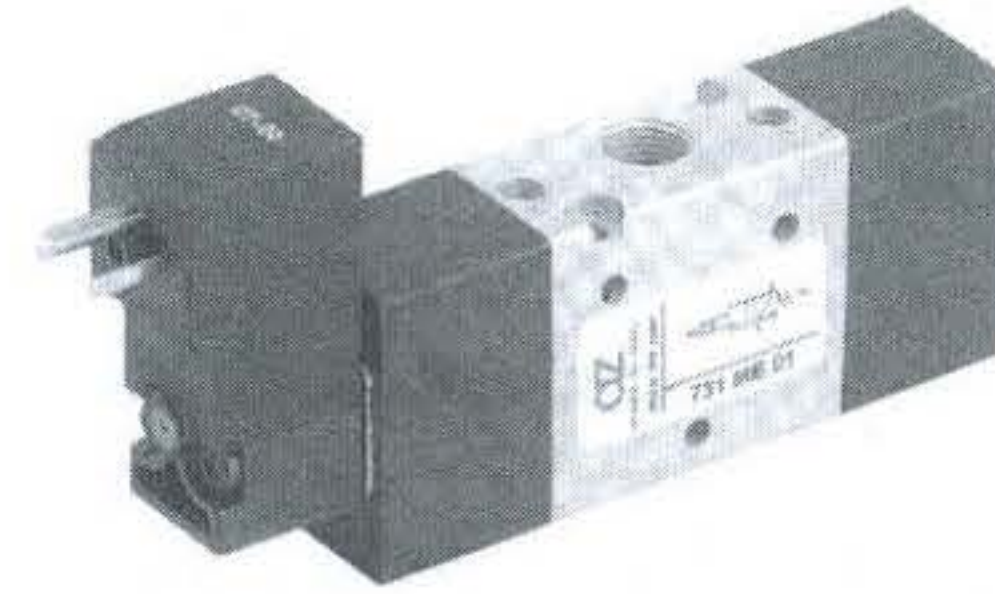
Diametro nominale <i>Nominal orifice</i>		4.5 mm	
Portata nominale a 6 bar, Δp 1 bar <i>Nominal flow rate at 6 bar, Δp 1 bar</i>		500 NI/min	
Temperatura di esercizio <i>Temperature range</i>		max + 60°C	
Pressione di esercizio <i>Working pressure</i>	al. interna monost. (<i>monost. internal air supply</i>)	al. interna bist. (<i>bi-stable internal air supply</i>)	alim. separata (<i>separate air supply</i>)
	2.5 ... 10 bar 0.25 ... 1 MPa	1 ... 10 bar 0.1 ... 1 MPa	max 10 bar max 1 MPa
Pressione di azionamento (per alimentazione separata) <i>Actuating pressure (for separate air supply)</i>		monostabile (<i>mono-stable</i>)	bistabile (<i>bi-stable</i>)
		2.5 ... 10 bar 0.25 ... 1 MPa	1 ... 10 bar 0.1 ... 1 MPa
Fluido <i>Fluid</i>		Aria filtrata 50 μ con o senza lubrificazione <i>50μ filtered, lubricated or non lubricated air</i>	

Nella sigla del prodotto sostituire le lettere "xx" con l'indicazione della tensione.

In the part number replace

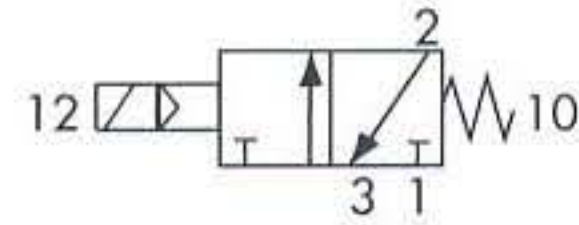
"xx" with the reference of the solenoid tension.

12V DC	00
24V DC	01
24V 50/60Hz	02
110V 50/60Hz	03
220V 50/60Hz	04



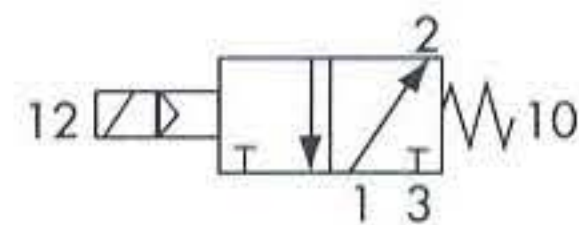
731ME xx

normalmente chiusa
normally closed



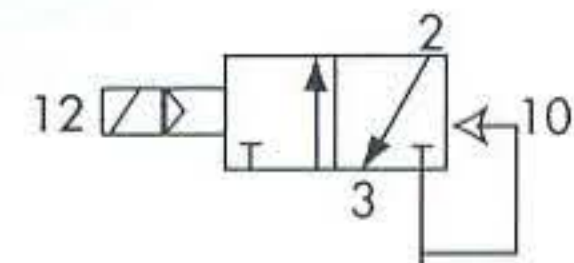
731MEA xx

normalmente aperta
normally open



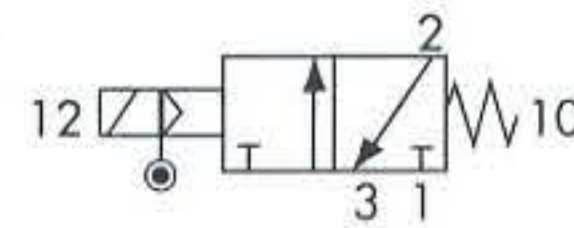
3/2 1/8" comando elettrico - ritorno a molla
3/2 1/8" solenoid pilot - spring return

731 EFP xx

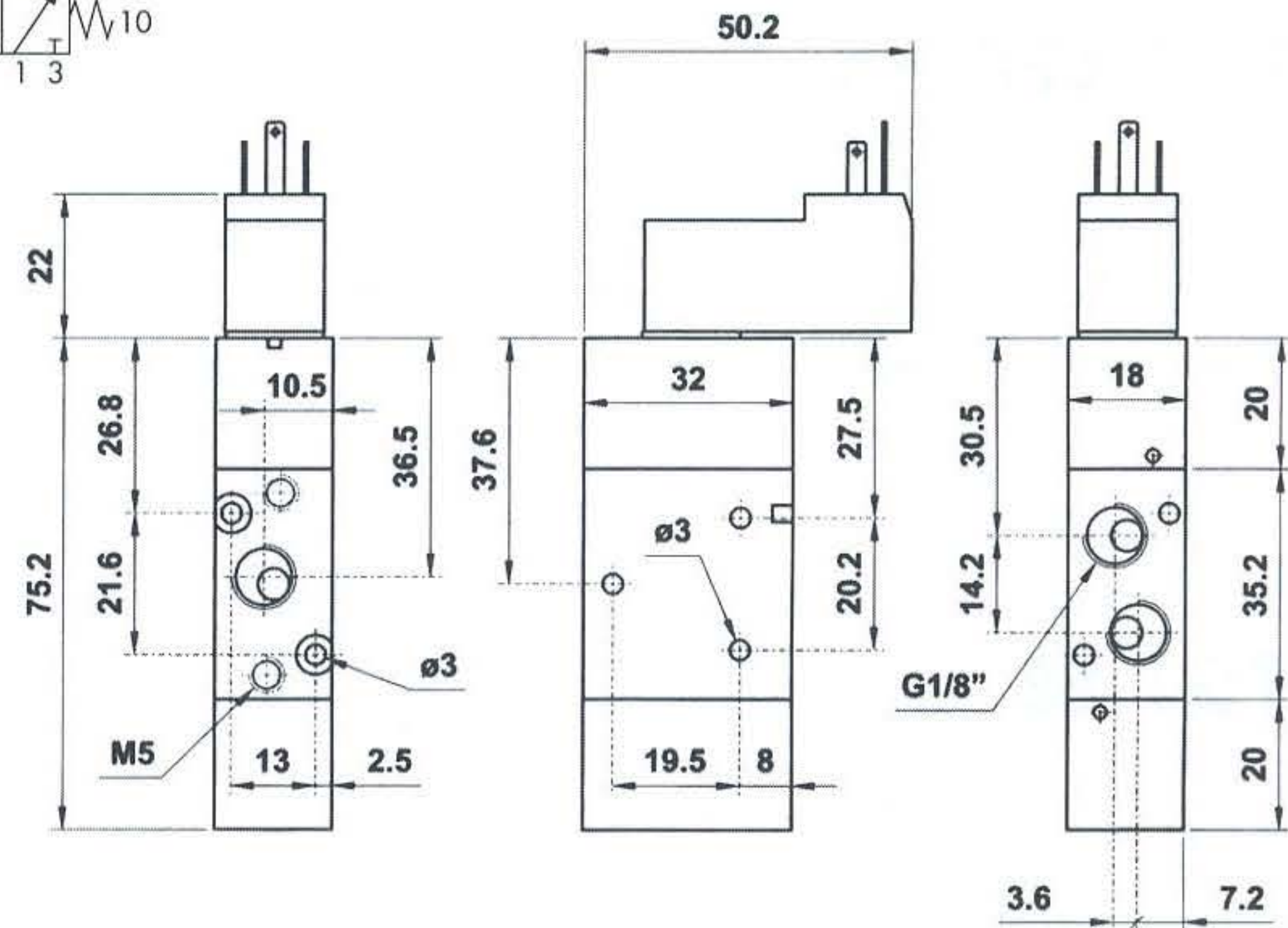


3/2 1/8" comando elettrico - ritorno a molla pneumatica
3/2 1/8" solenoid pilot - pneumatic spring return

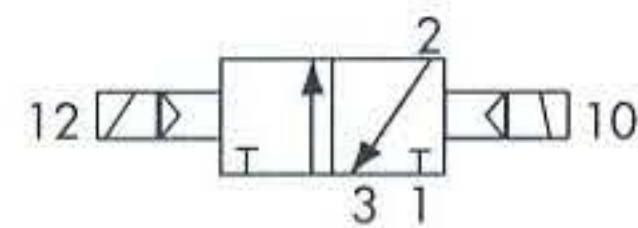
731 ME AS xx



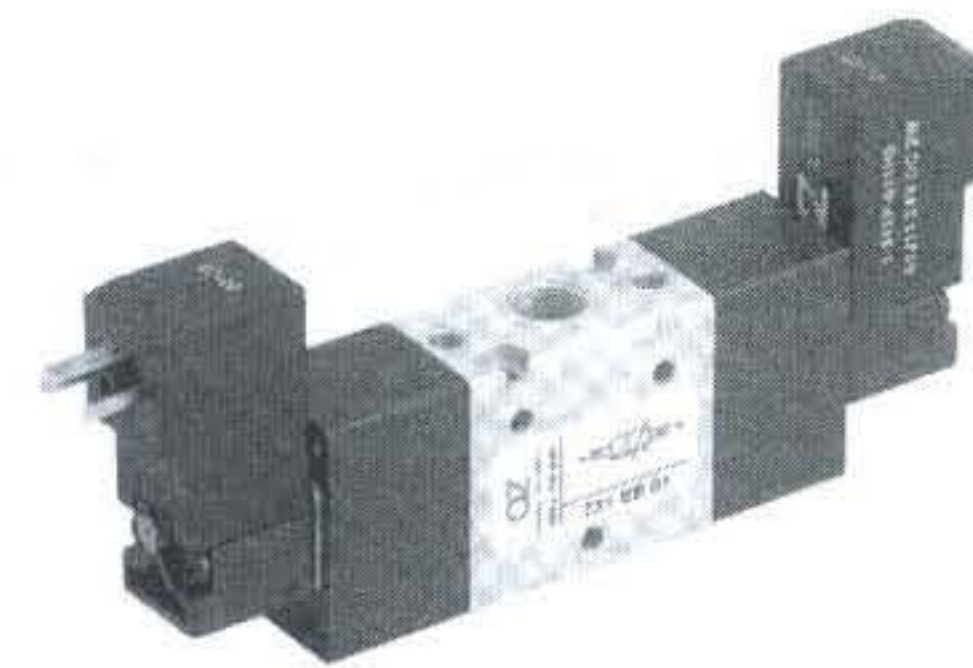
3/2 1/8" comando elettrico alimentazione separata
ritorno a molla
3/2 1/8" solenoid pilot with separate air supply
spring return



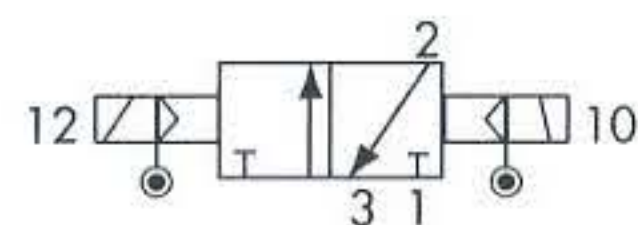
731 EE xx



3/2 1/8" doppio comando elettrico
3/2 1/8" double solenoid pilot



731 EE AS xx



3/2 1/8" doppio comando elettrico alimentazione separata
3/2 1/8" double solenoid pilot with separate air supply

